



Walking speed based on 2 miles per hour at a gentle pace.
100m ≈ 2 minutes



Zoom



Visitor Hub

- Information point
- Toilets
- Accessible toilets
- Baby changing
- Shop
- Café
- Picnic area

Visitor Hub

- Toilets
- Accessible toilets
- Baby changing
- Shop
- Café
- Picnic area

- P** Car park
- P** Accessible parking
- i** Information point
- T** Toilets
- T** Accessible toilets
- B** Baby changing
- S** Shop
- C** Café
- P** Picnic area
- W** Pond dipping
- W** Play area
- N** Natural play area
- V** Covered viewpoint
- S** Stepping stones
- C** Coach parking
- A** Wildlife Gardens
- B** Lilypad Pond
- C** Education Space
- D** Copse Meadow
- R1** Numbered reedbeds
- P** Path
- R** Road
- R** Reedbeds
- X** Power lines
- M** Marsh / mudflats

Dogs on leads welcome in the courtyard. No dogs on the reserve except assistance dogs.

Paths shown on site are granted as a permissive route by the RSPB for your enjoyment. © Crown Copyright. All rights reserved. RSPB licence AC0000813580

Discover Old Moor



Bearded Tit

Reedbed Path

500m (560yds)
10-minute walk



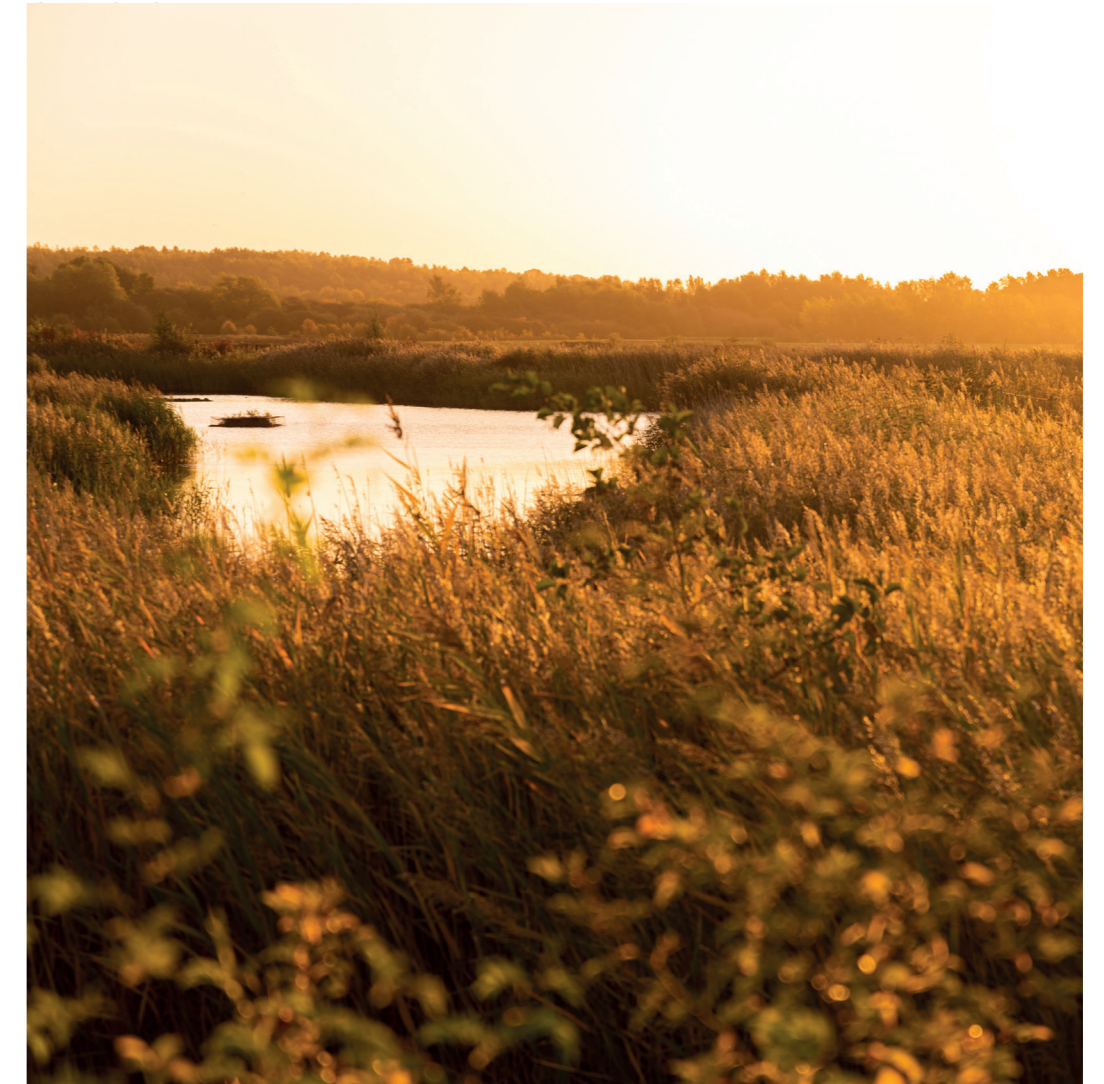
This peaceful path leads you to the Reedbed Hide and back, with plenty of pausing places for a mindful moment with nature. You could glimpse the bright blue flash of a Kingfisher, spot a secretive Bittern hiding in the reeds or see the acrobatic antics of Bearded Tits.

What is the trail like?

It's mostly wide and flat, with a smooth surface. There's one long, moderate (7%) slope. Some stretches can be damp after heavy rain.

Good to know

This path is closed in spring to give breeding birds the peace and quiet they need to raise



Discovery Trail

500m (560yds), 10-minute walk



Come and enjoy this family-friendly adventure trail! It's where budding adventurers can hop across stepping stones, climb a tower, and splash through the water zone. The paths meander past wildlife ponds and pools, all buzzing with life.

What is the trail like?

It's mostly wide, smooth paths, with a few short sections of boardwalk with handrails. There's a short, fairly steep (18%) incline up to the Bittern Hide.

Good to know

There are picnic benches dotted around this area, as well as a variety of play spaces. Watch your step though, as paths to these play areas can be grassy and uneven, and there are narrow, wobbly bridges too. In summer, you can hire pond dipping kits to help you get close to underwater wildlife.



Green Lane Loop

1.2km (0.75 mile)
25-minute walk



You'll be treated to beautiful views across the wetlands as you amble along this trail. Remember to pop into the hides along the way, for a chance to see Avocets, Lapwings and Redshanks, as well as ducks, geese and gulls out on the mere.

What is the trail like?

There are a couple of short, moderate slopes along this route. The paths are smooth and wide. Some areas can be muddy with puddles after heavy rain. The bridges are wide and flat.

For alternative maps, please scan the QR codes



Detailed map with accessibility information



Map for families



Stay connected

Keep up to date with the latest thinking, news, events and information from RSPB Old Moor.

RSPB Dearne Valley – Old Moor

Old Moor Lane, Wombwell, Bolton upon Dearne, Barnsley S73 0YF

old.moor@rspb.org.uk
01226 751593
[rspb.org.uk/oldmoor](https://www.rspb.org.uk/oldmoor)

@RSPB_OldMoor

/OldMoorRSPB

Royal Society for the Protection of Birds (RSPB) is a registered charity: England & Wales no. 207076, Scotland no. SC037654. TWD-2433 March 2024 © RSPB. Bearded Tit by Edwin Kats. Boy and sunset images by Rosie Dutton. Daytime landscape by Andy Hay. All photographs © rspb-images.com

Please recycle after use.